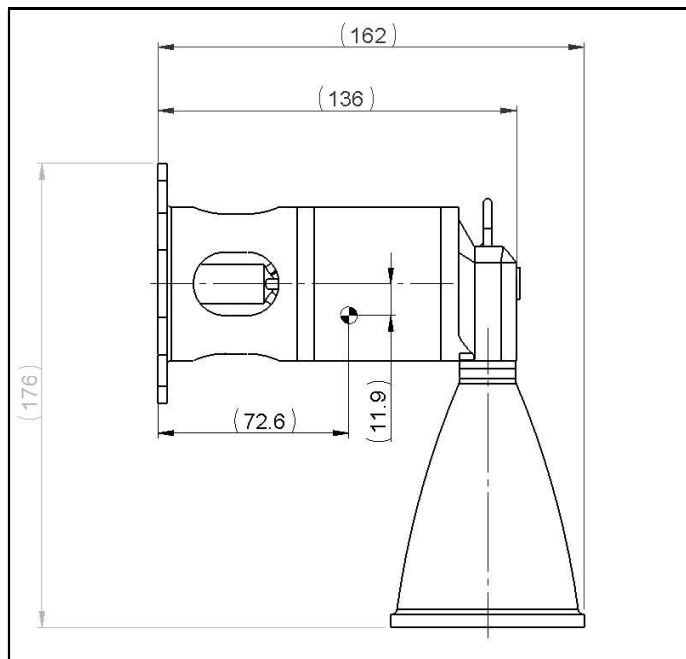




200N Thruster

| Characteristics | Parameter |
|----------------------------|---|
| Propellant | Hydrazine (N ₂ H ₄) |
| Feed Pressure (bar abs.) | 31 (nominal), down to 8 |
| Thrust, Steady State (N) | 200±5% |
| SSF Specific Impulse (sec) | >220 |
| QSS MIB (N-s) | < 17.5 at D/C 0.08/2 |
| Rise Time 90% (ms) | <150 |
| Decay Time 10% (ms) | < 250 |
| Flow Control | FCV - single-coil, single-seat, NC solenoid valve |
| Nozzle Expansion Ratio | 50 |
| Weight (gr.) | ≤ 1,250 |
| Heritage | Israeli satellite launcher |



200 N Thruster