
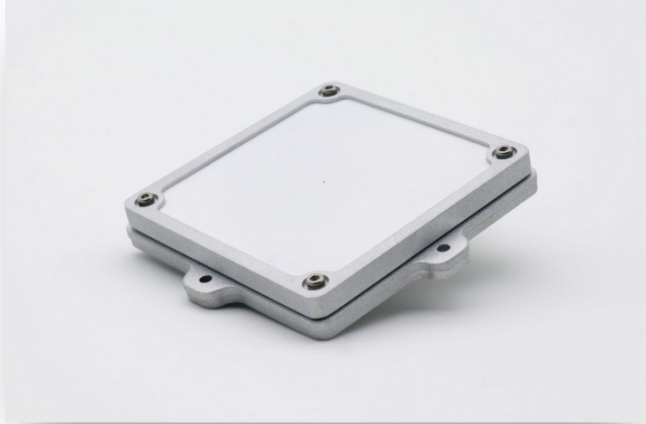


SPAN-X-T3 

## X Band Antenna



This T3 version permits on the best trade-off on the market, between miniaturization (cubesat patch design), and advanced performances (Gain and axial ratio).

## Characteristics

### APPLICATIONS

- Cube & Nano satellites
- Patch design
- S-Band TTC

### BENEFITS & KEY FEATURES

- Fitted to Syrlinks EWC31 & EWC31-Rx
- Omnidirectionnel
- Full duplex
- High-End performances: Gain & Axial ratio

### QUALITY & RELIABILITY

- Mechanical & thermal tested
- Measurements: Conducted / Return loss, Radiated patterns (Gain, Axial Ratio)

### HERITAGE

- Q1-2018 (upon request)