

MICRO SATELLITE CE-SAT-1B



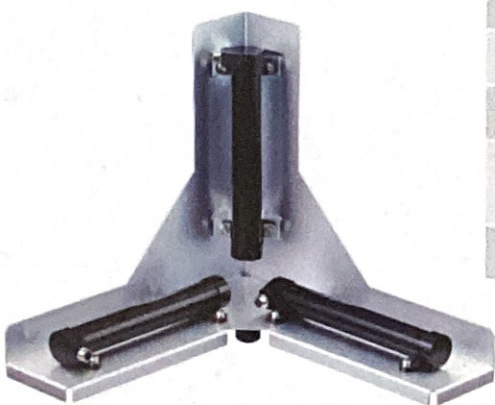
Mass	67 [kg]
Size	498x498x852[mm]
Attitude Control	Three axis stabilization
Bus Voltage	+18[V]
Communication	Up:S-band 32Kbps Down:X-band 7Mbps
Detector	EOS 5D markIII
GSD	1[m]@600km
Shooting Area	6[km] x 4[km]



OPTICAL PAYLOAD

	Optical System (400mm)	Optical System (200mm)	Optical System (87mm)
Telescope type	Cassegrain + Correction lens	Cassegrain + Correction lens	Cassegrain + Correction lens
Primary mirror diameter	400 mm	200 mm	87mm
Focal length	3720 mm	1860 mm	809 mm
F Number	9.3	9.3	9.3
Detector + Image processor	Canon EOS 5D MarkIII base	Canon EOS Mirrorless base	C mount camera base
Image sensor type	CMOS area sensor	CMOS area sensor	CMOS area sensor
Image size	Approx. 36 mm x 24 mm	Approx. 13 mm x 9 mm	Approx. 9 mm x 6 mm
Effective pixels	Approx. 22.3 megapixels	Approx. 8.5 megapixels	Approx. 3.8 megapixels
Pixel pitch	6.25 μm	Approx. 3.7 μm	Approx. 3.7 μm
Color filter system	RGB primary color filters	RGB primary color filters	RGB primary color filters
Resolution	1m GSD (@600 km)	2m GSD equiv.(@600 km)	6m GSD equiv.(@600km)
Shooting area	5.8 km x 3.8 km (@600 km)	4.3 km x 2.9 km (@600 km)	6.6 km x 4.4 km (@600km)
Dimensions	480 mm x 480 mm x 760 mm	250 mm x 250 mm x 440 mm	140 mm x 100 mm x 220 mm
Weight	20 kg	5.5 kg	1.5 kg

ACTUATOR



MAGNETIC TORQUER (MTQ)	
Mass	360[g]
Size	176x50x30[mm]
Power	5[VDC], 0.35[W]
Linear Dipole Moment	4[Am ²]
Operating Temp	-20°C~60°C



REACTION WHEEL (RW005)	
Mass	300[g]
Size	Φ50[mm]
Power	<0.5[W] (3500[rpm])
Torque	>0.005[Nm]
Wheel Rate	3500[rpm]
Operating Temp	-10°C~+40°C
Communication Interface	RS422